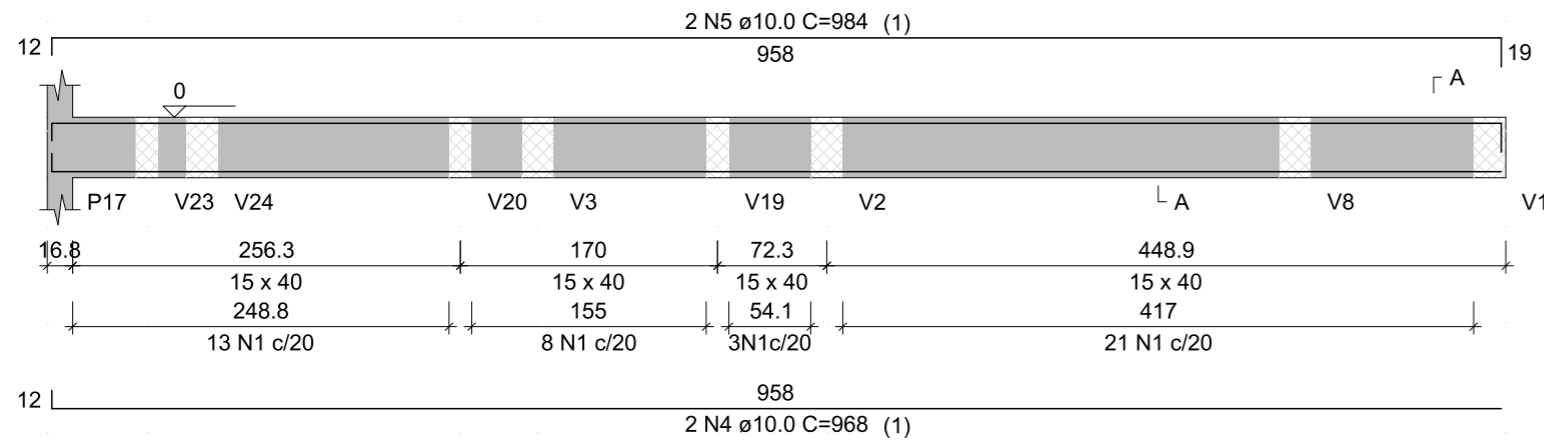


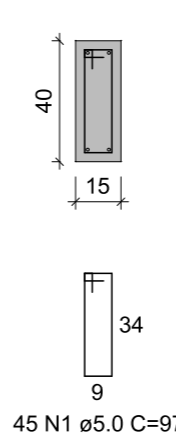
### V21

ESC 1:50



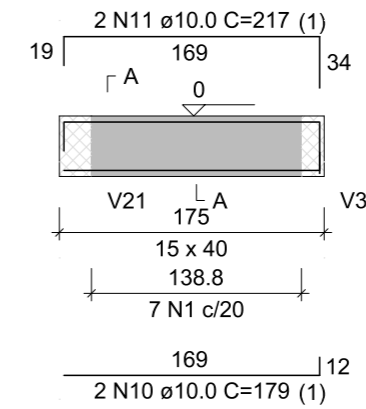
### SEÇÃO A-A

ESC 1:25



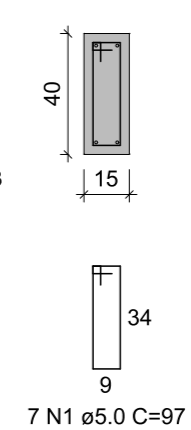
### V24

ESC 1:50



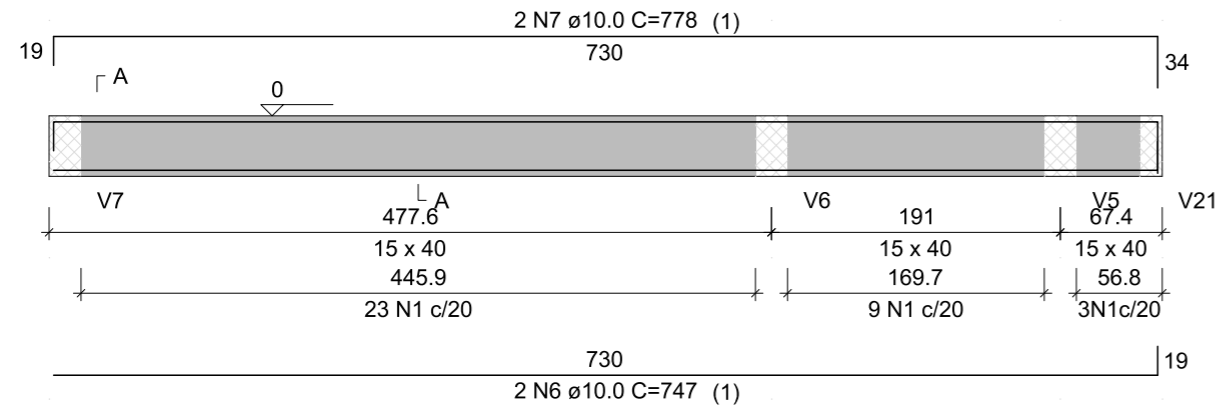
### SEÇÃO A-A

ESC 1:25



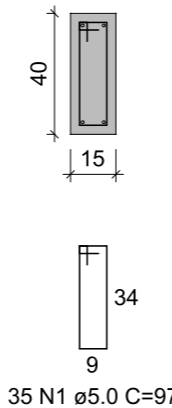
### V23

ESC 1:50



### SEÇÃO A-A

ESC 1:25



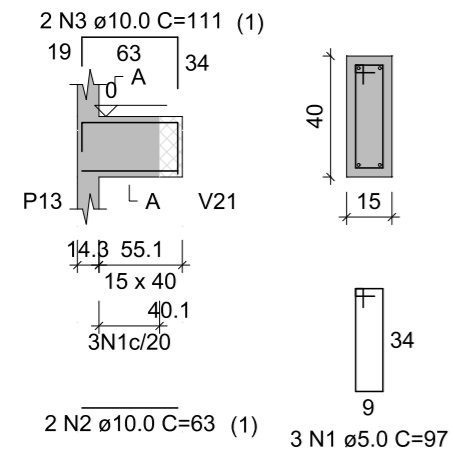
### RESUMO DO AÇO

AÇO	DIAM (mm)	C.TOTAL (m)	QUANT + 0% (Barras)	PESO + 0% (kg)
CA50	10.0	86.2	8	53.1
CA60	5.0	92.2	-	14.2
PESO TOTAL (kg)				
CA50		53.1		
CA60		14.2		

Volume de concreto (C-30) = 1.24 m<sup>3</sup>  
Área de forma = 19.61 m<sup>2</sup>

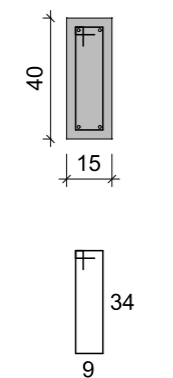
### V20

ESC 1:50



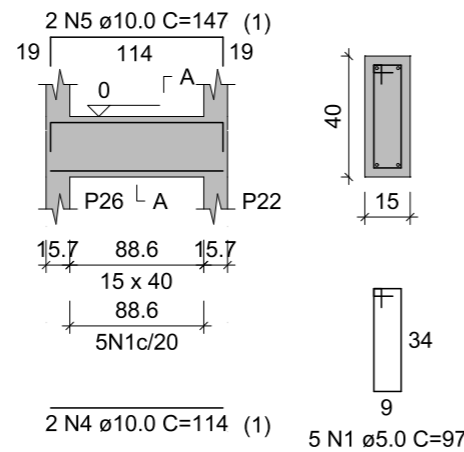
### SEÇÃO A-A

ESC 1:25



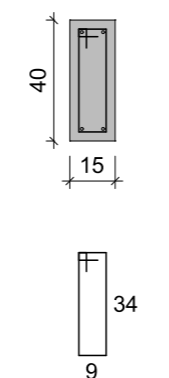
### V22

ESC 1:50



### SEÇÃO A-A

ESC 1:25



## Prefeitura Municipal de Sapucaia do Sul

Secretaria Municipal de Planejamento Urbano e Habitação  
Diretoria de Projetos

### PLANEJAMENTO

**VOLMIR RODRIGUES**  
Prefeito

**IMÍLIA DE SOUZA**  
Vice-Prefeita

**RAFAEL STRÖHER**  
Secretário da SMPUH

TÍTULO: **AMPLIAÇÃO CLISAM**

ENDEREÇO DA OBRA: Rua José de Alencar, s/n - Bairro Kurashiki - Sapucaia do Sul / RS

CONTEÚDO:

**VIGAS DE BALDRAME 2**

PROJETO:

Eng. Robinson Ferreira dos Passos  
CREA RS193.418

DATA

JUL/23

PRANCHA

DESENHISTA

Robinson Ferreira dos Passos

ÁREA DE INTERVENÇÃO

138,89m<sup>2</sup>

ESCALA

INDICADA

# PE06